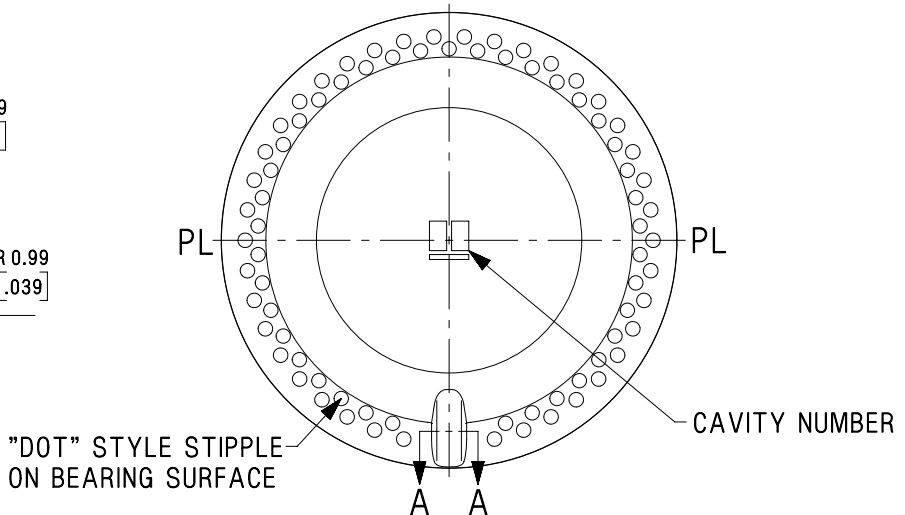
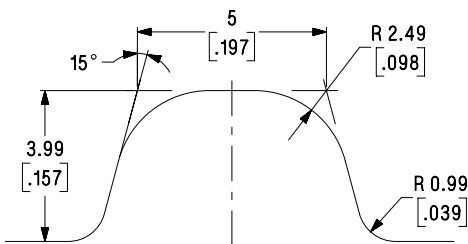
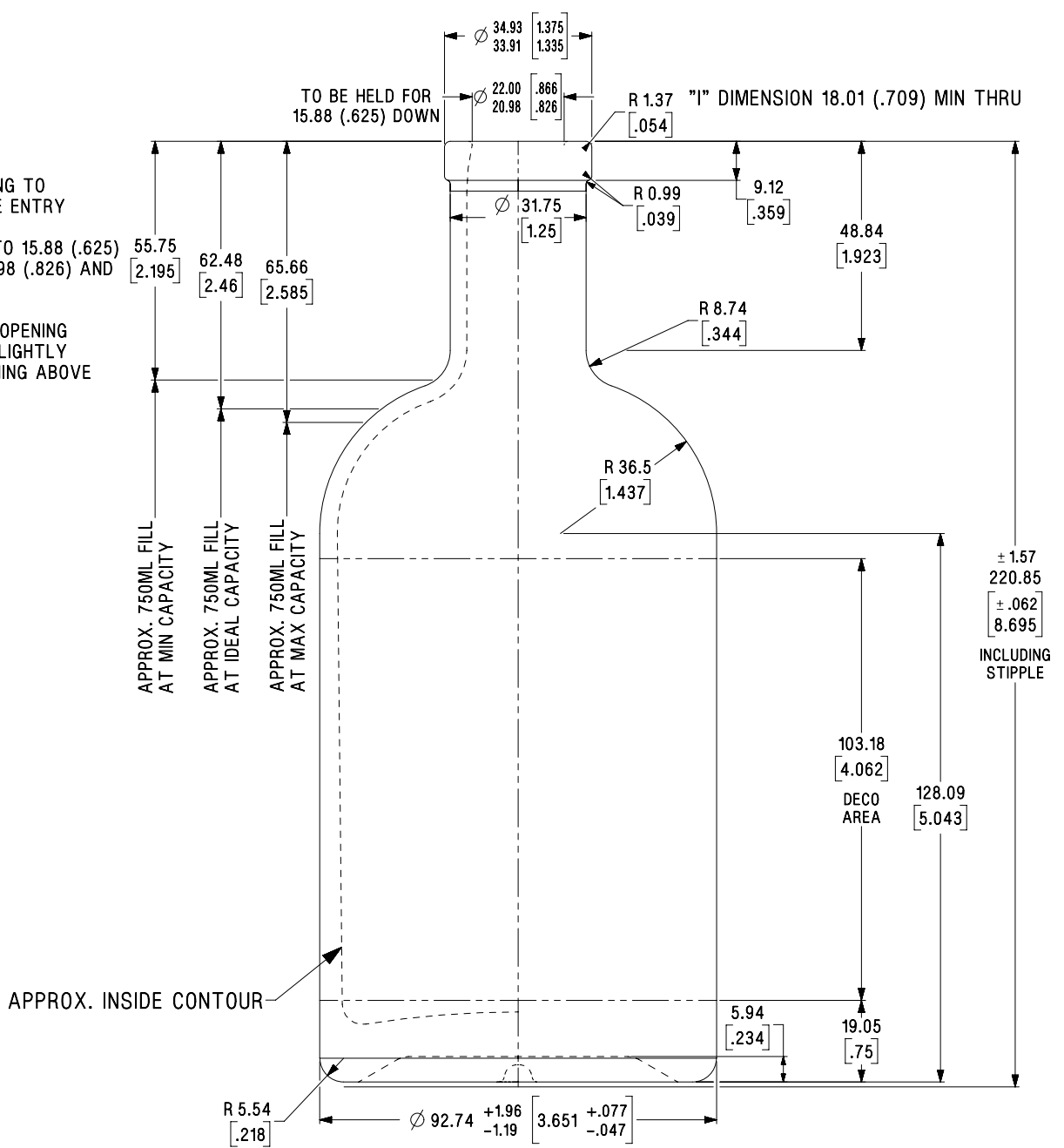


HEADSPACE		
		UNDER CORK
MIN. CAP.	3.25%	2.33%
IDEAL CAP.	4.17%	3.26%
MAX. CAP.	5.06%	4.18%

"C" DIMENSION CONTROLS OPENING TO 15.88 (.625) DOWN FROM BOTTLE ENTRY

OPENING FROM 3.0 (.118) DOWN TO 15.88 (.625) DOWN TO BE NO LESS THAN 20.98 (.826) AND NO GREATER THAN 22.00 (.866)

FOR GOOD CORK FIT - CONTROL OPENING BELOW 3.0 (.118) DOWN TO BE SLIGHTLY GREATER THAN SMALLEST OPENING ABOVE



SCALE	BY	DATE	CHK	O'FLOW CAP.
FULL				782.6 ml ± 7.4
DESCRIPTION				WEIGHT
				698.0 g
<b>750 ML FINLAND</b>				FINISH
				Cork - 21.5mm Bore
<b>Liquor Bottle</b>				DWG. NO.
				SK-1821